

HEAT PUMP VRF CATALOGUE

Variable Refrigerant Flow System

Fujitsu General (Thailand) Co., Ltd.



ISO 9001 Certification number: 01 100 075229
ISO 14001 Certification number: 01 104 9245

Fujitsu General (Shanghai) Co., Ltd.



ISO 9001 Certification number: 01 100 79329
ISO 14001 Certification number: CNB31264-UK

Fujitsu General Central Air-conditioner (Wuxi) Co., Ltd.



ISO 9001 Certification number: 1591702007/855M
ISO 14001 Certification number: 1591812002/855M

- The products and equipment listed in this catalog contain fluorinated greenhouse gases.
- "AIRSTAGE" is a worldwide trademark of Fujitsu General Limited and is a registered trademark in Japan and other countries and regions.
- "Fga" is a worldwide trademark of Fujitsu General Limited.
- iPhone and iPod touch are trademarks of Apple Inc., registered in the United States and other countries.
- "Microsoft," "Windows," and "Direct X" are trademarks of Microsoft Corporation in the United States and other countries.
- "Intesis" is a registered trademark of HMS Industrial Networks in the European Union and is trademarked in the rest of the world.
- "IntesisHome" is a registered trademark of Intesis Software S.L.
- "BACnet" is a trademark and registered trademark of the American Society of Heating, Refrigerating and Air-Conditioning Engineers, Inc.
- "MODBUS" is a registered trademark of Schneider Electric.
- "LOWWORKS" and "Echelon" are trademarks of Echelon Corporation registered in the United States and other countries.
- "Adobe" and "Acrobat Reader" are either registered trademarks or trademarks of Adobe in the United States and/or other countries.
- "Android" is a trademark of Google LLC.
- Other company and product names mentioned in this document may be the registered trademarks, trademarks or trade names of their respective owners.
- Actual products' colors may be different from the colors shown in this printed material.

Distributed by:

FUJITSU GENERAL LIMITED

3-3-17, Suenaga, Takatsu-ku, Kawasaki, Kanagawa, 213-8502, Japan
www.fujitsu-general.com



Copyright© 2013-2023 Fujitsu General Limited. All rights reserved. 6AF009-2303E

FUJITSU

HEAT PUMP VRF CATALOGUE

Variable Refrigerant Flow System

HEAT PUMP VRF CATALOGUE

FUJITSU GENERAL AUSTRALIA

REFRIGERANT
R410A

INVERTER

FUJITSU GENERAL LIMITED

OUR MESSAGE

SOLUTIONS

CORE TECHNOLOGY

AIRSTAGE™ SERIES

INDOOR UNITS

VENTILATION

CONTROL SYSTEMS

OPTION

SUPPORT

HEAT PUMP TYPE

VRF J-III Series

Fujitsu General provides air conditioning systems for a wide range of applications from small office buildings and stores to large houses.

System Outline

High Energy Efficiency

Heat pump inverter control is used to achieve an efficient cooling and heating operation in any indoor unit combination.

Flexible systems for small- and medium-size buildings air conditioning

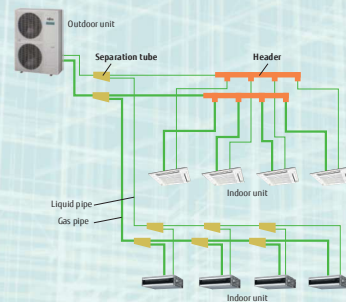
Space saving design and long piping design allow for flexible installation on the roofs or balconies of small- and medium-size buildings. Multiple indoor units of various capacities and types can be connected.

Small Office



System configuration example

- This system is used for small and medium-sized buildings. 1 refrigerant system is used for each outdoor unit.
- Connection of multiple indoor units using separation tubes and headers.



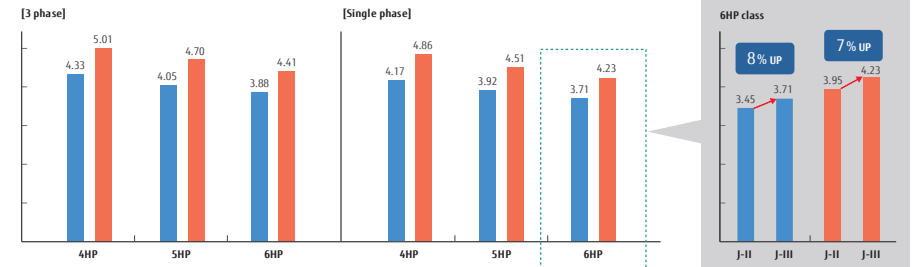
Features

Efficiency in actual operation

Top class high COP is achieved for all models by large heat exchanger, high efficient DC twin compressor, and our own technologies.

High EER / COP

■ EER ■ COP



Advanced high efficiency technology



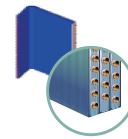
Large propeller fan

High performance and low noise realized by large propeller and optimization of angle.



DC fan motor

Miniaturized, low noise, high efficiency, multi-stage DC fan motor is mounted.



Large heat exchanger

Heat exchange performance is substantially improved by mounting of 3-row large heat exchanger.



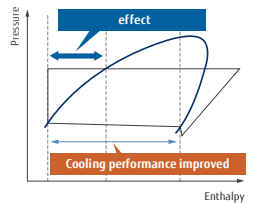
DC inverter control

Efficiency is improved by mounting of new active filter module.



Subcool heat exchanger

Cooling performance is improved by mounting of dual tube heat exchanger.



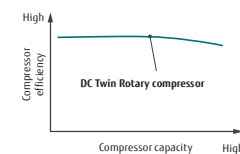
High efficiency compressor motor

Optimized refrigerant flow design

Highly accurate parts

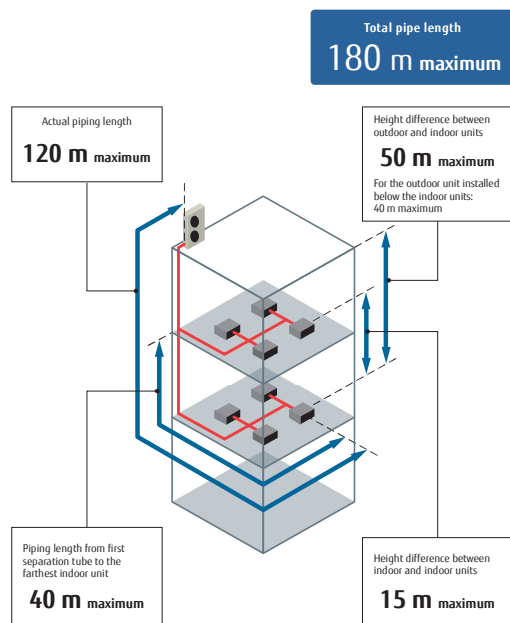
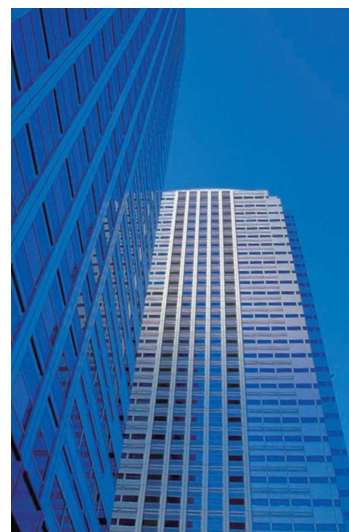
DC twin rotary compressor

Efficiency in all load regions is good. Especially good performance from low to medium at normal operation.



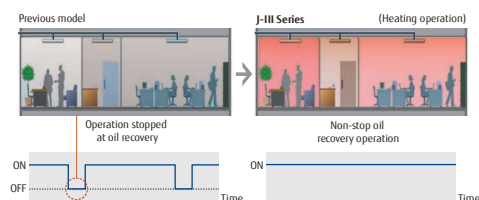
Long piping capability

Our advanced refrigerant control technology allows us to achieve a total refrigerant piping length of 180 m. This opens up new possibilities in system design.



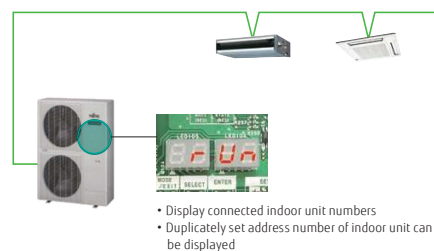
Non-stop oil recovery operation

A comfortable room condition is maintained during oil recovery mode because the product continues to operate without stopping the cooling or heating operation.



Easier Installation

Connection check function : Possible to confirm whether wiring connection and address setting are correct by a quick check run function.



Specifications

[illegible]

Note : Specifications are based on the following conditions.

Cooling : Indoor temperature of 27°CDB / 19°CWB, and outdoor temperature of 35°CDB / 24°CWB.

Heating : Indoor temperature of 20°CDB / (15°CWB), and outdoor temperature of 7°CDB / 6°CWB

Pipe length : 7.5 m; Height difference between outdoor unit and indoor unit : 0 m

The protective function may work when using it outside the operation range.

Dimensions

Models : AJY040LBLAH / AJY045LBLAH / AJY054LBLAH / AJA040LBLAH / AJA045LBLAH / AJA054LBLAH / AJY040LELAH / AJY045LELAH / AJY054LELAH

(Unit : mm)

