

Cassette

AUXG18KRLB / AOYG18KATA
 AUXG22KRLB / AOYG22KATA
 AUXG24KRLB / AOYG24KATA
 AUXG30KRLB / AOYG30KATA
 AUXG36KRLB / AOYG36KATA
 AUXG45KRLB / AOYG45KATA
 AUXG54KRLB / AOYG54KATA



AUXG18/22/24KRLB

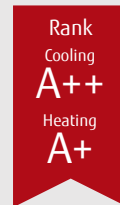


AUXG30/36/45/54KRLB



High efficiency and unique circular flow design

Cassette type realizes Circular Flow to blow large air flow in 360° direction by mounting high performance DC fan motor, turbo fan and unique seamless air flow louver design.



SEER

7.00

(18/22 models)

SCOP

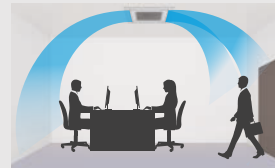
4.40

(22 model)

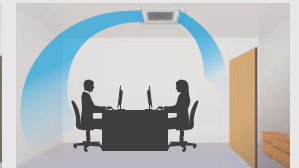
Individual louver control

Each louver can be set individually by Touch Panel Wired Remote Controller to enjoy the comfort of different directional air flows according to various room layouts.

*Touch Panel Wired RC (UTY-RNRYZ3) only



Comfortable air conditioning by preventing direct blowing of cold air and by providing swinging air flow simultaneously.



Efficient air conditioning based on the room layout



Compact and lightweight outdoor unit

45 model outdoor unit was changed completely. Easier installation was realized by compact and lightweight outdoor unit.

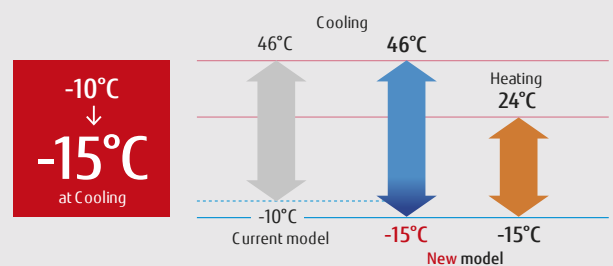


Current model

New 45/54 models

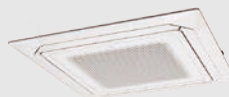


Low ambient operation



Various cassette grille

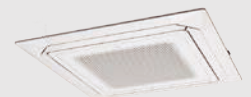
Both black and white color grilles are available. There are three types, white color grille with Remote Controller, only white color grille and only black color grille. Possible to choose according to the atmosphere and the use of the room.



UTG-UKYA-W
 White Color Grille
 With touch panel wired remote controller

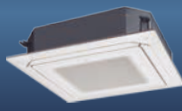


UTG-UKYA-B
 Black Color Grille



UTG-UKYC-W
 White Color Grille

Model: AUXG18KRLB / AUXG22KRLB / AUXG24KRLB / AUXG30KRLB / AUXG36KRLB / AUXG45KRLB / AUXG54KRLB
 AOYG18KATA / AOYG22KATA / AOYG24KATA / AOYG30KATA / AOYG36KATA / AOYG45KATA / AOYG54KATA



AUXG18/22/24KRLB



AUXG30/36/45/54KRLB



AOYG18/22KATA



AOYG24KATA



AOYG30/36KATA



AOYG45/54KATA

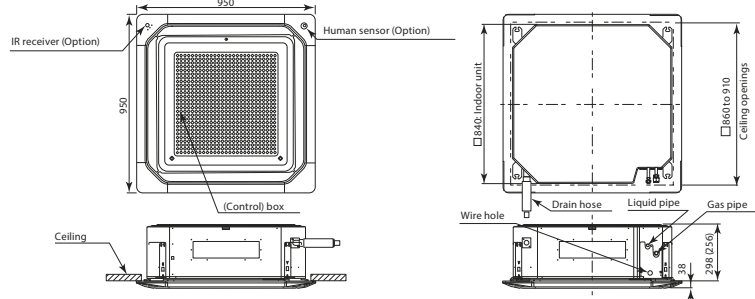
Optional parts

Wired Remote Controller:	UTY-RNRYZ3, UTY-RLRY, UTY-RVNYM, UTY-RNNYM
Simple Remote Controller:	UTY-RSRY, UTY-RHRY, UTY-RSNYM
IR Receiver Kit:	UTY-LBTYC
Wireless LAN Interface:	UTY-TFSXZ1
Human Sensor Kit:	UTY-SHZXC
Cassette Grille:	UTG-UKYA-W, UTG-UKYC-W, UTG-UKYA-B
Wide Panel:	UTG-AKXA-W
Panel Spacer:	UTG-BKXA-W
Fresh Air Intake Kit:	UTZ-VXRA
Air Outlet Shutter Plate:	UTR-YDZK
Insulation Kit for High Humidity:	UTZ-KXRA
External Input and Output PCB (with box):	UTY-XCSX + UTZ-GXRA
External Connect Kit:	UTY-XWZXZG

Dimensions

Indoor unit : AUXG18/22/24/30/36/45/54KRLB

(Unit : mm)



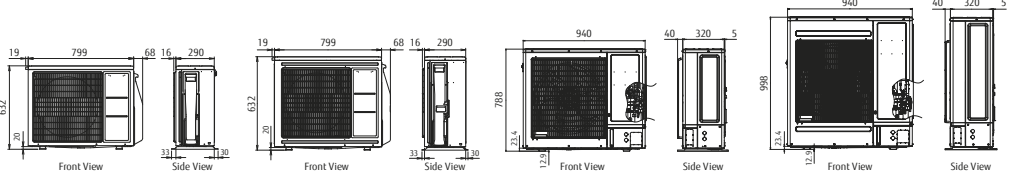
() : AUXG18/22/24KRLB

Outdoor unit :
AOYG18/22KATA

AOYG24KATA

AOYG30/36KATA

AOYG45/54KATA



Specifications

Model No.	Indoor unit		AUXG18KRLB	AUXG22KRLB	AUXG24KRLB	AUXG30KRLB	AUXG36KRLB	AUXG45KRLB	AUXG54KRLB
	Outdoor unit		AOYG18KATA	AOYG22KATA	AOYG24KATA	AOYG30KATA	AOYG36KATA	AOYG45KATA	AOYG54KATA
Power Source			Single-phase, ~230V, 50Hz						
Capacity	Cooling	kW	5.2 (0.9-5.4)	6.0 (0.9-6.3)	6.8 (0.9-7.4)	8.5 (2.8-9.6)	9.5 (2.8-10.6)	12.1 (4.0-12.6)	13.4 (4.5-13.8)
	Heating		6.0 (0.9-6.3)	7.0 (0.9-7.4)	7.5 (0.9-8.6)	10.0 (2.7-10.8)	10.8 (2.7-12.5)	13.5 (4.2-15.0)	15.5 (4.7-16.0)
Input Power	Cooling/Heating	kW	1.60/1.66	1.85/1.93	2.12/1.97	2.56/2.64	3.06/2.58	4.32/3.77	4.87/4.86
EER	Cooling	W/W	3.25	3.24	3.21	3.32	3.10	2.80	2.75
	Heating		3.61	3.63	3.81	3.79	4.19	3.58	3.19
Pdesign	Cooling/Heating (-10°C)	kW	5.2/3.8	6.0/4.4	6.8/5.4	8.5/8.0	9.5/8.7	-	-
SEER	Cooling	W/W	6.20	6.20	6.10	6.10	6.10	-	-
	Heating (Average)		4.10	4.10	4.00	4.00	4.00	-	-
Energy Efficiency Class	Cooling	A	A++	A++	A++	A++	A++	-	-
	Heating (Average)		A+	A+	A+	A+	A+	-	-
Max. Operating Current	Cooling/Heating	A	10.1	11.6	12.6	22.5	22.5	28.1	28.1
Annual Energy Consumption	Cooling	kWh/a	293	338	390	488	545	-	-
	Heating		1,297	1,502	1,887	2,794	3,044	-	-
Moisture Removal		l/h	1.5	2.2	2.7	2.5	3.3	4.5	5.0
Sound Pressure Level	Indoor (Cooling)	H/M/L/Q	33/32/31/28	33/32/31/28	35/33/32/29	40/38/36/33	44/41/38/34	46/42/39/35	47/43/40/36
	Indoor (Heating)	H/M/L/Q	33/32/31/28	33/32/31/28	35/33/32/29	40/38/36/33	44/41/38/34	46/42/39/35	47/43/40/36
Sound Power Level	Outdoor (Cooling/Heating)	High	51/52	52/53	54/55	53/55	55/55	58/59	58/61
	Indoor (Cooling/Heating)	High	47/47	49/49	49/49	54/54	58/58	60/60	61/61
Airflow Rate	Indoor / Outdoor (Cooling)	High	1,050/1,710	1,050/2,240	1,150/2,885	1,600/3,750	1,870/3,750	2,000/4,450	2,100/4,450
	Indoor / Outdoor (Heating)	High	1,050/1,840	1,050/2,240	1,150/2,350	1,600/3,750	1,870/3,750	2,000/4,450	2,100/4,780
Net Dimensions	Indoor	mm	246x840x840	246x840x840	246x840x840	288x840x840	288x840x840	288x840x840	288x840x840
H x W x D	Outdoor	mm	542x799x290	632x799x290	632x799x290	788x940x320	788x940x320	998x940x320	998x940x320
Weight	Indoor	kg (lbs)	23 (51)	23 (51)	24 (53)	26 (57)	29 (64)	29 (64)	29 (64)
	Outdoor	kg (lbs)	33 (73)	36 (79)	38 (84)	52 (115)	52 (115)	61 (134)	63 (139)
Connection Pipe Diameter (Liquid / Gas)		mm	6.35/12.70	6.35/12.70	6.35/12.70	9.52/15.88	9.52/15.88	9.52/15.88	9.52/15.88
Drain hose Diameter (I.D./O.D.)		mm	25/32	25/32	25/32	25/32	25/32	25/32	25/32
Max Pipe Length (Pre-Charge)		m	20 (15)	25 (15)	25 (20)	30 (30)	30 (30)	30 (30)	30 (30)
Max Height Difference		m	15	20	20	30	30	30	30
Operation Range	Cooling	°CDB	-10 to 46	-10 to 46	-10 to 46	-10 to 46	-10 to 46	-10 to 46	-10 to 46
	Heating		-15 to 24	-15 to 24	-15 to 24	-15 to 24	-15 to 24	-15 to 24	-15 to 24
Refrigerant	Type (Global Warming Potential)		R32 (675)	R32 (675)	R32 (675)	R32 (675)	R32 (675)	R32 (675)	R32 (675)
	Charge	kg(CO2eq-T)	0.9 (0.608)	1.1 (0.743)	1.25 (0.844)	1.90 (1.283)	1.90 (1.283)	2.40 (1.620)	2.40 (1.620)
Cassette Grille	Variation		UTG-UKYA-W: White Color with touch panel wired remote controller UTG-UKYC-W: White Color / UTG-UKYA-B*1: Black Color						
	Dimensions (H x W x D)	mm	53x950x950	53x950x950	53x950x950	53x950x950	53x950x950	53x950x950	53x950x950
	Weight	kg (lbs)	6.0 (13)	6.0 (13)	6.0 (13)	6.0 (13)	6.0 (13)	6.0 (13)	6.0 (13)

Note : Specifications are based on the following conditions.
 Cooling : Indoor temperature of 27°CDB / 19°CWB, and outdoor temperature of 35°CDB / 24°CWB.
 Heating : Indoor temperature of 20°CDB / (15°CWB), and outdoor temperature of 7°CDB / 6°CWB.

*1: IR Receiver kit and human sensor kit cannot be connected.

Distributed by :

CÔNG TY TNHH THƯƠNG MẠI & DỊCH VỤ MEIWACO
 Trụ sở tại Thành Phố Hồ Chí Minh

308 Ung Văn Khiêm, Phường 25, Quận Bình Thạnh, TP.HCM, VN
 TEL: 028. 3535.6839



ISO 9001 Certified number: 01 180 07529 Fujitsu General (Thailand) Co., Ltd.
 ISO 14001 Certified number: 01 184 9245 Fujitsu General (Thailand) Co., Ltd.
 ISO 9001 Certified number: 1501702073R54 Fujitsu General Central Air-conditioner (Wuxi) Co., Ltd.
 ISO 14001 Certified number: 1501802001R54 Fujitsu General Central Air-conditioner (Wuxi) Co., Ltd.

FUJITSU GENERAL LIMITED

3-3-17, Suenaga, Takatsu-ku, Kawasaki 213-8502, Japan
<https://www.fujitsu-general.com/>

Copyright© 2018 Fujitsu General Limited. All rights reserved. 3EFNP30-1812E