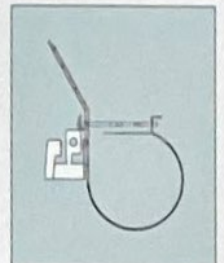
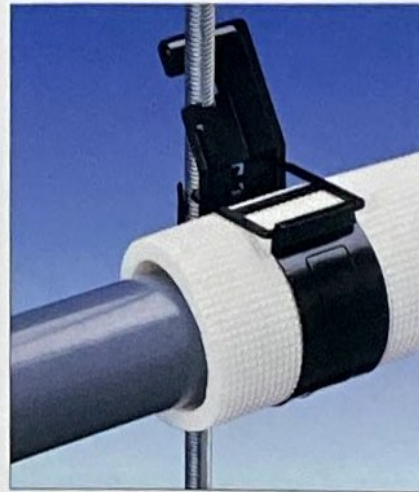
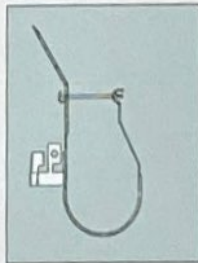


ACCESSORIES

Pair Hanger • Metal fittings to support insulated copper tubes and drain pipe.

- Quick and easy to install
- No tools or preparation required to install
- Saves time for the installer
- Fits securely on threaded rod
- Easy to stock and transport



Item code	Weight (g)	Material	Conformable size	Color	Packing pcs/carton
PNE-2	67	steel	1/4 x 5/8 ~ 1/2 x 3/4	black	200
PNE-3	72	steel	1/4 x 5/8 ~ 5/8 x 1	black	200
PNE-4	81	steel	1/4 x 5/8 ~ 1 1/8 x 1 1/2	black	150

Item code	Weight (g)	Material	Conformable size	Color	Packing pcs/carton
SDP-3	58	steel	20 · 25 · 30	black	100

• Installation

①

Fit Pair Hanger onto threaded rod from the side gap.

②

Push Pair Hanger toward the threaded rod, as shown.

③

Bend the back stopper of PNE, fit in the threaded rod.

④

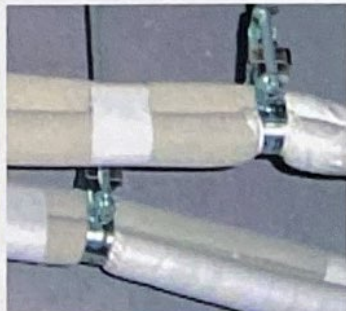
Set IPO-Tube, wire and/or hoses into the Pair Hanger

⑤

Lock PNE.

⑥

Insulation Support • Support parts for insulation wastage with Pair Hanger



insulation collapsed by its weight. Condensation occurs when insulation collapses.

- Wide support
- Any inclination fitting
- Quick and easy to install
- Fits with any maker of pair hanger
- Anytime installable

Item code	Dimension (mm)			Packing pcs/carton	Material
	Width	Height	Length		
PNE-SP	57	27.5	100	200	PP

High-Drain S

High-Drain ● High-Drain hose has excellent weatherability and mold resistance.



High-Drain S

Item code	Inner diameter × Outer diameter (mm)	Length (m)	Packing Pcs/carton
DRS-14	φ14×19	50	8

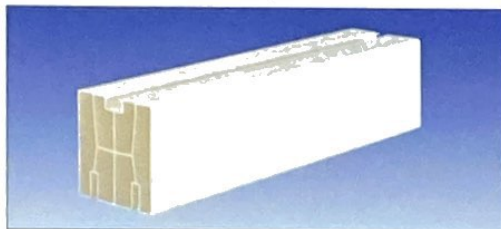


High-Drain

Item code	Inner diameter × Outer diameter (mm)	Length (m)	Packing Pcs/carton
DRX-14	φ14×19	50	1
DRX-16	φ16×20.5	50	1

Base Rock

● Made of PVC resin. Sturdy outdoor air conditioner stand.



Item code	Size (mm)			Weight (g)	Color	Packing Pcs/carton
	H	W	L			
DSD-350N	82	83	350	586	Ivory	30
DSD-400N	82	83	400	670	Ivory	30
DSD-1000N	82	83	1,000	1,675	Ivory	10

- 1 Maximum load 120kg (For temperature of 50°C)
- 2 Lightweight (about 1/5 of concrete block)

● Option



DSD-EC
End cap for Base Rock



DSD-MP
Fixing metal plate for Base Rock

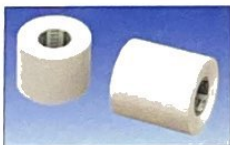
PE Bender

● Used into the copper pipe when bend it.



Item code	Size for Copper tube	Length (m)	Packing Pcs/carton
ZAKT-3	for 3/8" (φ9.52mm)	25	5
ZAKT-4	for 1/2" (φ12.7mm)	25	5
ZAKT-5	for 5/8" (φ15.88mm)	15	5
ZAKT-6	for 3/4" (φ19.05mm)	10	5

Non-adhesive Tape



Item code	Size	Packing Pcs/carton
H-1	50mm×18m	100

Saddle



Item code	Packing Pcs/carton
S-1	500

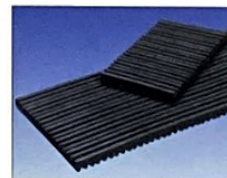
Adhesive Tape



Item code	Size	Packing Pcs/carton
N-5	50mm×20m	80

color : Ivory

Antivibration Rubber Mat



Item code	Size (mm)	Packing Pcs/carton
BM-100T	t10×W100×L1,000	10
BM-150T	t10×W150×L1,000	10
BM-300T	t10×W300×L300	20
BM-15-100T	t15×W100×L1,000	10

Material : Natural Rubber (NR)

CONIC JOINT

CONIC JOINT

● Unique flareless fittings for aluminum pipes



1 "CONIC JOINT" brings a breakthrough!

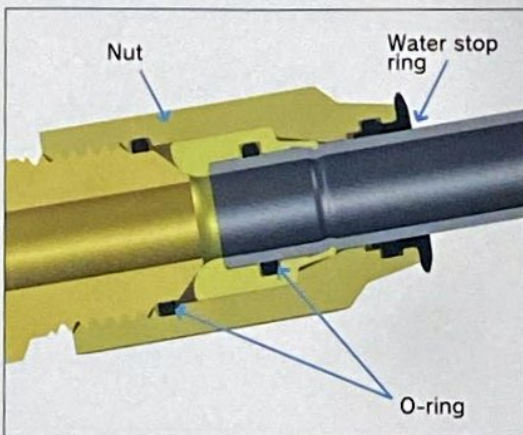
"CONIC JOINT" prevents corrosion due to different metal contact. (aluminum & brass)

2 It's easy and quick to install "IPO TUBE ALIGHT" and "CONIC JOINT".

INOAC developed no flare fitting to avoid risk of flaring aluminum.

"IPO TUBE ALIGHT" and "CONIC JOINT" need no torque wrench and no flare tools.

3 "CONIC JOINT" is applicable for both of Aluminum and Copper pipes.



● CONIC JOINT

Item code	Conformable pipe size	Packing Pcs/carton
CJ-06A	1/4" (6.35mm)	100
CJ-09A	3/8" (9.52mm)	100
CJ-12A	1/2" (12.7mm)	50
CJ-15A	5/8" (15.88mm)	50

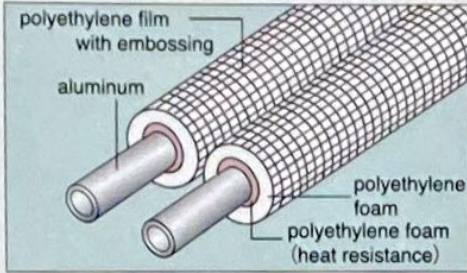
● Tightening Tool

Item code	Conformable pipe size	Packing Pcs/carton
CJTT-0609	1/4"&3/8"(6.35&9.52)	5
CJTT-0612	1/4"&1/2"(6.35&12.7)	5
CJTT-0915	3/8"&5/8"(9.52&15.88)	5

IPO TUBE ALIGHT

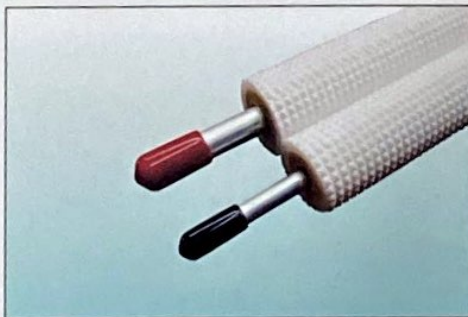
IPO TUBE ALIGHT

● Aluminum tubes for air-conditioner



- 1** Light weight and low cost. Aluminum is lighter than copper and has lower thermal conductivity.
- 2** It's easy and quick to install "IPO TUBE ALIGHT". Aluminum is easier to cut or bend and can be used like copper.
- 3** Polyethylene foam which has excellent heat resistance characteristic is used in the insulation layer thus allowing for an even higher level of heat insulation. It is possible to use this pipe at continuous temperature of 100°C and intermittent temperatures of up to 120°C.

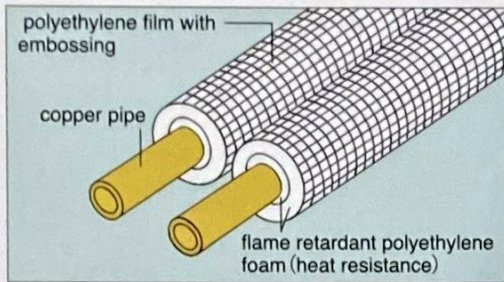
	Item code	Aluminum pipe			Insulation	Coil meter	Color of end cap	Packing
		Nominal size	Outer diameter (mm)	Thickness (mm)	Thickness (mm)	(M)		(pcs/carton)
Pair	ALP-23	1/4"	6.35	0.8	9	20	2	1
	ALP-23-30	3/8"	9.52	1.0	9	30	3	
	ALP-24	1/4"	6.35	0.8	9	20	2	1
	ALP-24-30	1/2"	12.70	1.3	10	30	4	
	ALP-35	3/8" 5/8"	9.52 15.88	1.0 1.3	9 10	20	3 5	1
Single	ALS-2	1/4"	6.35	0.8	9	20	2	2
	ALS-2-30					30		1
	ALS-2-50					50		1
	ALS-3	3/8"	9.52	1.0	9	20	3	2
	ALS-3-30					30		1
	ALS-3-50					50		1
	ALS-4	1/2"	12.70	1.3	10	20	4	2
	ALS-4-30					30		1
	ALS-4-50					50		1
	ALS-5	5/8"	15.88	1.3	10	20	5	2
	ALS-5-30					30		1
	ALS-5-50					50		1



IPO-TUBE ASFR·APFR

● EURO CLASS B_L,s1,d0 approved Flame Retardant Insulation

Class B_L



- 1 APFR and ASFR are insulated with flame retardant polyethylene, which has EURO CLASS B_L,s1,d0 grade in Europe. Both items are new and have EURO CLASS B_L,s1,d0 grade for all of insulation.
- 2 It is possible to use this pipe at continuous temperature of 100°C and intermittent temperature of up to 110°C.

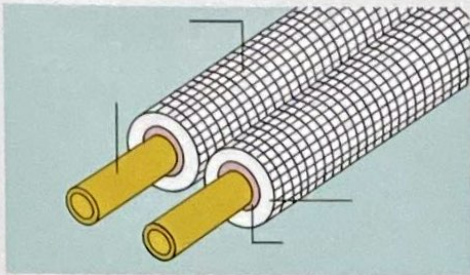
	Item code	Copper pipe			Insulation	Coil meter	Color of end cap	Packing
		Nominal size	Outer diameter (mm)	Thickness (mm)	Thickness (mm)	(M)		(pcs/carton)
Pair	APFR-23	1/4"	6.35	0.8	9	20	② ③	1
	APFR-23-30	3/8"	9.52	0.8	9	30		
	APFR-24	1/4"	6.35	0.8	9	20	② ④	1
	APFR-24-30	1/2"	12.70	0.8	10	30		
	APFR-25	1/4"	6.35	0.8	9	20	② ⑤	1
		5/8"	15.88	1.0	10	20		
	APFR-35	3/8"	9.52	0.8	9	20	③ ⑤	1
		5/8"	15.88	1.0	10	20		
APFR-36	3/8"	9.52	0.8	9	20	③ ⑥	1	
	3/4"	19.05	1.0	10	20			
APFR-46	1/2"	12.70	0.8	10	20	④ ⑥	1	
	3/4"	19.05	1.0	10	20			
Single	ASFR-2	1/4"	6.35	0.8	9	20	②	2
	ASFR-2-30					30		1
	ASFR-2-50					50		1
	ASFR-3	3/8"	9.52	0.8	9	20	③	2
	ASFR-3-30					30		1
	ASFR-3-50					50		1
	ASFR-4	1/2"	12.70	0.8	10	20	④	2
	ASFR-4-30					30		1
	ASFR-4-50					50		1
	ASFR-5	5/8"	15.88	1.0	10	20	⑤	2
	ASFR-5-30					30		1
	ASFR-5-50					50		1
	ASFR-6	3/4"	19.05	1.0	10	20	⑥	1
	ASFR-7	7/8"	22.22	1.15	10	20	⑦	1



IPO-TUBE

IPO-TUBE AS·AP

● 20*30*50 meter coil with insulation



- 1** Polyethylene foam which has excellent heat resistance characteristic is used in the insulation layer thus allowing for an even higher level of heat insulation. It is possible to use this pipe at continuous temperature of 100°C and intermittent temperatures of up to 120°C.
- 2** Because heat insulation material and copper pipe form one covered pipe it is not necessary to insert insulation material after the pipe is fitted. Therefore the total process of fitting the pipe can be done quickly.
- 3** According to the combination of polyethylene resin and the closed cell construction of the insulation layer, creates very effective resistance to dew build up.

	Item code	Copper pipe			Insulation	Coil meter	Color of end cap	Packing
		Nominal size	Outer diameter (mm)	Thickness (mm)	Thickness (mm)	(M)		(pcs/carton)
Pair	AP-23	1/4"	6.35	0.8	9	20	②	1
	AP-23-30	3/8"	9.52	0.8	9	30	③	
	AP-24	1/4"	6.35	0.8	9	20	②	1
	AP-24-30	1/2"	12.70	0.8	10	30	④	
	AP-25	1/4"	6.35	0.8	9	20	②	1
		5/8"	15.88	1.0	10		⑤	
	AP-35	3/8"	9.52	0.8	9	20	③	1
		5/8"	15.88	1.0	10		⑤	
AP-36	3/8"	9.52	0.8	9	20	③	1	
	3/4"	19.05	1.0	10		⑥		
AP-46	1/2"	12.70	0.8	10	20	④	1	
	3/4"	19.05	1.0	10		⑥		
Single	AS-2	1/4"	6.35	0.8	9	20	②	2
	AS-2-30					30		1
	AS-2-50					50		1
	AS-3	3/8"	9.52	0.8	9	20	③	2
	AS-3-30					30		1
	AS-3-50					50		1
	AS-4	1/2"	12.70	0.8	10	20	④	2
	AS-4-30					30		1
	AS-4-50					50		1
	AS-5	5/8"	15.88	1.0	10	20	⑤	2
	AS-5-30					30		1
	AS-5-50					50		1
	AS-6	3/4"	19.05	1.0	10	20	⑥	1
	AS-7	7/8"	22.22	1.15	10	20	⑦	1

