

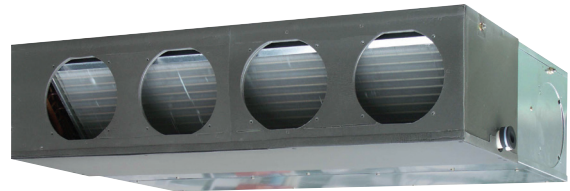
Low / Medium Static Pressure Duct

Models (Low Static Pressure Duct)

- ARXB24GALH
- ARXB30GALH
- ARXB36GALH
- ARXB45GALH

Models (Medium Static Pressure Duct)

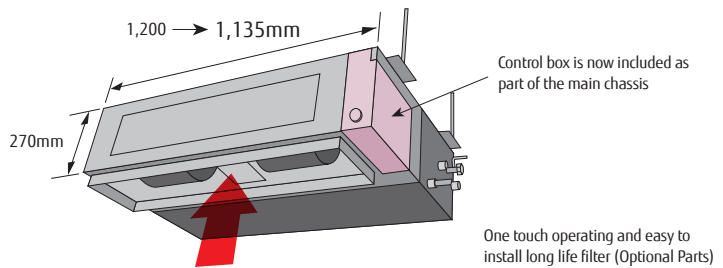
- ARXA24GBLH ARXA24GBTH
- ARXA30GBLH ARXA30GBTH
- ARXA36GBLH ARXA36GBTH
- ARXA45GBLH ARXA45GBTH



Feature

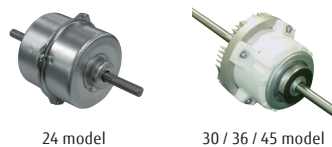
Slim & Compact design

In the case of bottom return air connection, not only does the indoor unit design allow for installation in a narrow ceiling space of up to 270mm, Further space savings have been achieved by mounting the electrical control box internally inside the chassis.



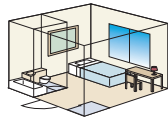
Low energy consumption by high efficiency DC fan motor

Improved motor efficiency from previous model.



Can be installed for various location

It can be installed in such locations as high-rise condominiums by low static pressure design.



It can also be installed in wide spade when high static pressure is required, such as for offices.



Selectable with a wide range of static pressure

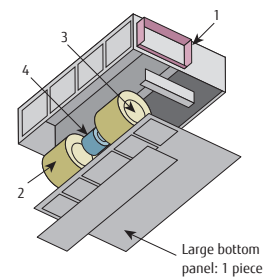
It is possible to change of static pressure range 0 to 150Pa.

Static pressure range
0 to 150 Pa

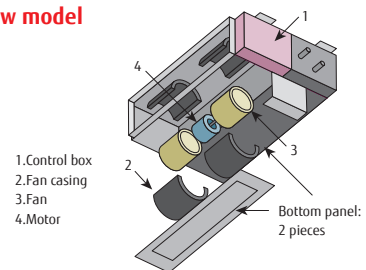
Easy maintenance

See below for the case of rear suction type

Previous model

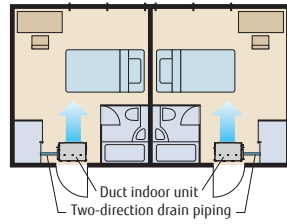


New model



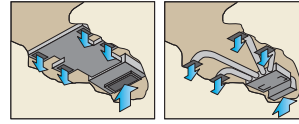
Structural improvement is attained by making the bottom panel two pieces, front and rear. The internal fan casing is also manufactured in two pieces, namely upper and lower. The maintenance of the motor and fan can be easily carried out by removing the rear panel and the lower part of the casing while leaving the main chassis installed.

Two-direction drain piping

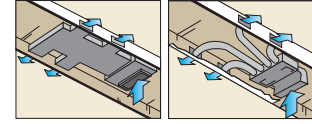


Installation styles

Embedded in Ceiling

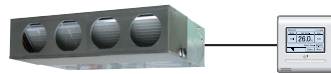


Hanging from Ceiling



Easy setting by using remote controller

The change of static pressure range is possible by remote controller



Optional parts

Remote Sensor Unit : UTY-XSZX

Long Life Filter : UTD-LF25NA

Flange (Square) : UTD-SF045T

Flange (Round) : UTD-RF204

IR Receiver Unit : UTB-YWC

Drain Pump Unit : UTZ-PX1NBA

Specifications

Model name		ARXB24GALH	ARXB30GALH	ARXB36GALH	ARXB45GALH	ARXA24GBLH ARXA24GBTH	ARXA30GBLH ARXA30GBTH	ARXA36GBLH ARXA36GBTH	ARXA45GBLH ARXA45GBTH
Power source		Single - phase, ~230V, 50Hz							
Capacity	Cooling	7.1	9.0	11.2	12.5	7.1	9.0	11.2	12.5
	Heating	8.0	10.0	12.5	14.0	8.0	10.0	12.5	14.0
Input power	W	145	198	253	338	94	108	194	240
Airflow rate	High	1,100	1,410	1,710	1,970	1,280	1,410	1,840	1,970
	Med	920	1,280	1,600	1,790	990	1,280	1,600	1,860
	Low	810	1,150	1,470	1,670	840	1,150	1,470	1,640
Static pressure range	Pa	0 to 80	0 to 80	0 to 80	0 to 80	0 to 150	0 to 150	0 to 150	0 to 150
Standard static pressure		40	50	50	60	40	50	50	60
Sound pressure level	High	31	34	37	41	31	34	37	41
	Med	27	32	35	38	27	32	35	38
	Low	25	29	33	36	23	29	33	36
Dimensions (H × W × D)	mm	270 × 1,135 × 700	270 × 1,135 × 700	270 × 1,135 × 700	270 × 1,135 × 700	270 × 1,135 × 700	270 × 1,135 × 700	270 × 1,135 × 700	270 × 1,135 × 700
Weight	kg	39	42	42	42	36	40	40	40
Connection pipe diameter	Liquid (Flare)	9.52	9.52	9.52	9.52	9.52	9.52	9.52	9.52
	Gas (Flare)	15.88	15.88	19.05	19.05	15.88	15.88	19.05	19.05
Drain hose diameter (I.D./O.D.)		25 / 32							

Note : Specifications are based on the following conditions.

Cooling : Indoor temperature of 27°CDB / 19°CWB, and outdoor temperature of 35°CDB / 24°CWB.

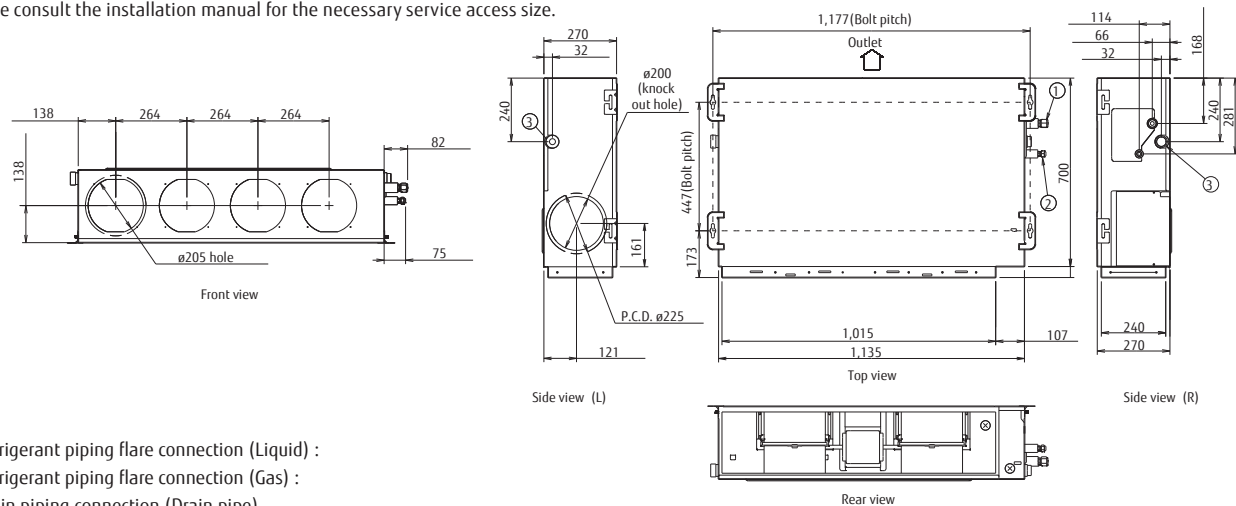
Heating : Indoor temperature of 20°CDB / (15°CWB), and outdoor temperature of 7°CDB / 6°CWB.

Pipe length : 7.5 m; Height difference between outdoor unit and indoor unit : 0 m. Voltage : 230 [V].

Dimensions (Unit: mm)

*Service accessibility must be allowed for when installing the product.

Please consult the installation manual for the necessary service access size.



① Refrigerant piping flare connection (Liquid) :

② Refrigerant piping flare connection (Gas) :

③ Drain piping connection (Drain pipe)