

Slim Duct / Slim Concealed Floor

Models (With drain pump)

- ARXD07GALH ARXD07GATH
- ARXD09GALH ARXD09GATH
- ARXD12GALH ARXD12GATH
- ARXD14GALH ARXD14GATH
- ARXD18GALH ARXD18GATH
- ARXD24GALH ARXD24GATH



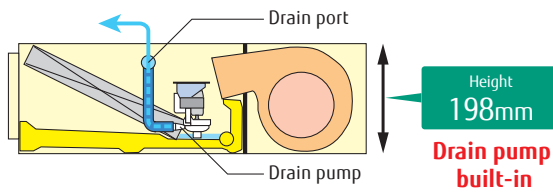
Slim Concealed Floor



Feature

Slim design

With a slim indoor design, this indoor can be installed in narrow ceiling spaces.



Selectable with a wide range of static pressure

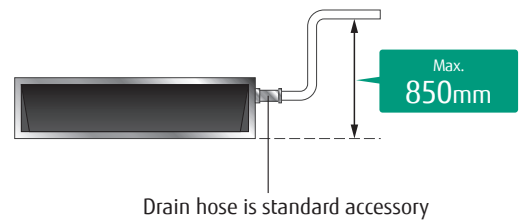
By using DC fan motor, it is possible to change of static pressure range 0 to 90Pa. The change of static pressure range is possible by remote controller.



Static pressure range
0 to 90 Pa

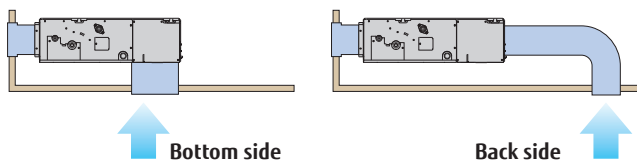
*24 model is 0 to 50Pa

High lift drain pump



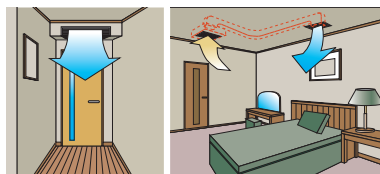
Air-intake

Air intake direction can be selected to match the installation site.

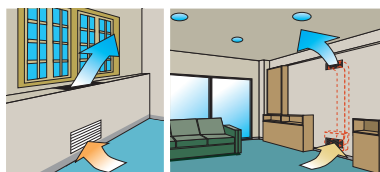


Flexible installation

Ceiling concealed

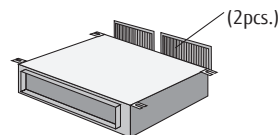


Floor concealed

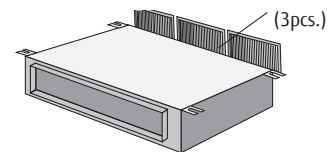


Filter (Accessory)

ARXD07/09/12/14/18

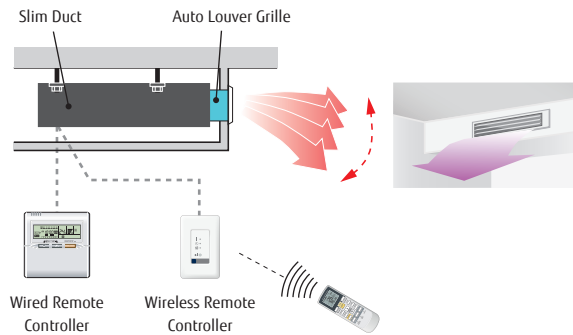


ARXD24



Auto Louver Grille Kit (Option)

Simple flat Auto Louver will provide comfort airflow and harmonize with luxury interior.



Optional parts

Remote Sensor Unit : UTY-XSZX
 IR Receiver Unit : UTB-YWC
 Auto Louver Grille Kit : UTD-GXTA-W (for ARXD07/09/12/14)
 UTD-GXTB-W (for ARXD18)
 UTD-GXTC-W (for ARXD24)

Specifications

Model name		ARXD07GALH ARXD07GATH	ARXD09GALH ARXD09GATH	ARXD12GALH ARXD12GATH	ARXD14GALH ARXD14GATH	ARXD18GALH ARXD18GATH	ARXD24GALH ARXD24GATH
Power source		Single - phase, ~230V,					
Capacity	Cooling	2.2	2.8	3.6	4.5	5.6	7.1
	Heating	2.8	3.2	4.0	5.0	6.3	8.0
Input power	W	44	50	54	92	83	122
Airflow rate	High	550	600	600	800	940	1,330
	Med	490	550	510	710	840	1,240
	Low	440	480	450	610	750	1,100
Static pressure range	Pa	0 to 90	0 to 90	0 to 90	0 to 90	0 to 90	0 to 50
Standard static pressure		25	25	25	25	25	25
Sound pressure level	High	28	29	30	34	34	35
	Med	25	26	27	32	32	32
	Low	22	24	24	28	28	29
Dimensions (H × W × D)	mm	198 × 700 × 620	198 × 700 × 620	198 × 700 × 620	198 × 700 × 620	198 × 900 × 620	198 × 1,100 × 620
Weight	kg	17	17	18	18	22	26
Connection pipe diameter	Liquid (Flare)	6.35	6.35	6.35	6.35	9.52	9.52
	Gas (Flare)	12.70	12.70	12.70	12.70	15.88	15.88
Drain hose diameter (I.D./O.D.)		25 / 32					

Note : Specifications are based on the following conditions.

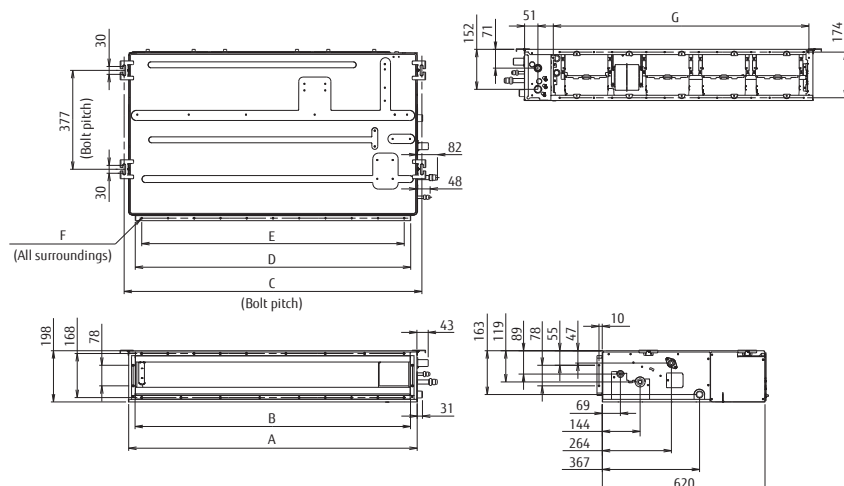
Cooling : Indoor temperature of 27°CDB / 19°CWB, and outdoor temperature of 35°CDB / 24°CWB.

Heating : Indoor temperature of 20°CDB / (15°CWB), and outdoor temperature of 7°CDB / 6°CWB.

Pipe length : 7.5 m; Height difference between outdoor unit and indoor unit : 0 m. Voltage : 230 [V].

Dimensions (Unit: mm)

*Service accessibility must be allowed for when installing the product.
 Please consult the installation manual for the necessary service access size.



	ARXD07-14	ARXD18	ARXD24
A	700	900	1,100
B	650	850	1,050
C	734	934	1,134
D	650	850	1,050
E	P100x6=600	P100x8=800	P100x10=1,000
F	18xØ5	22xØ5	26xØ5
G	574	774	974